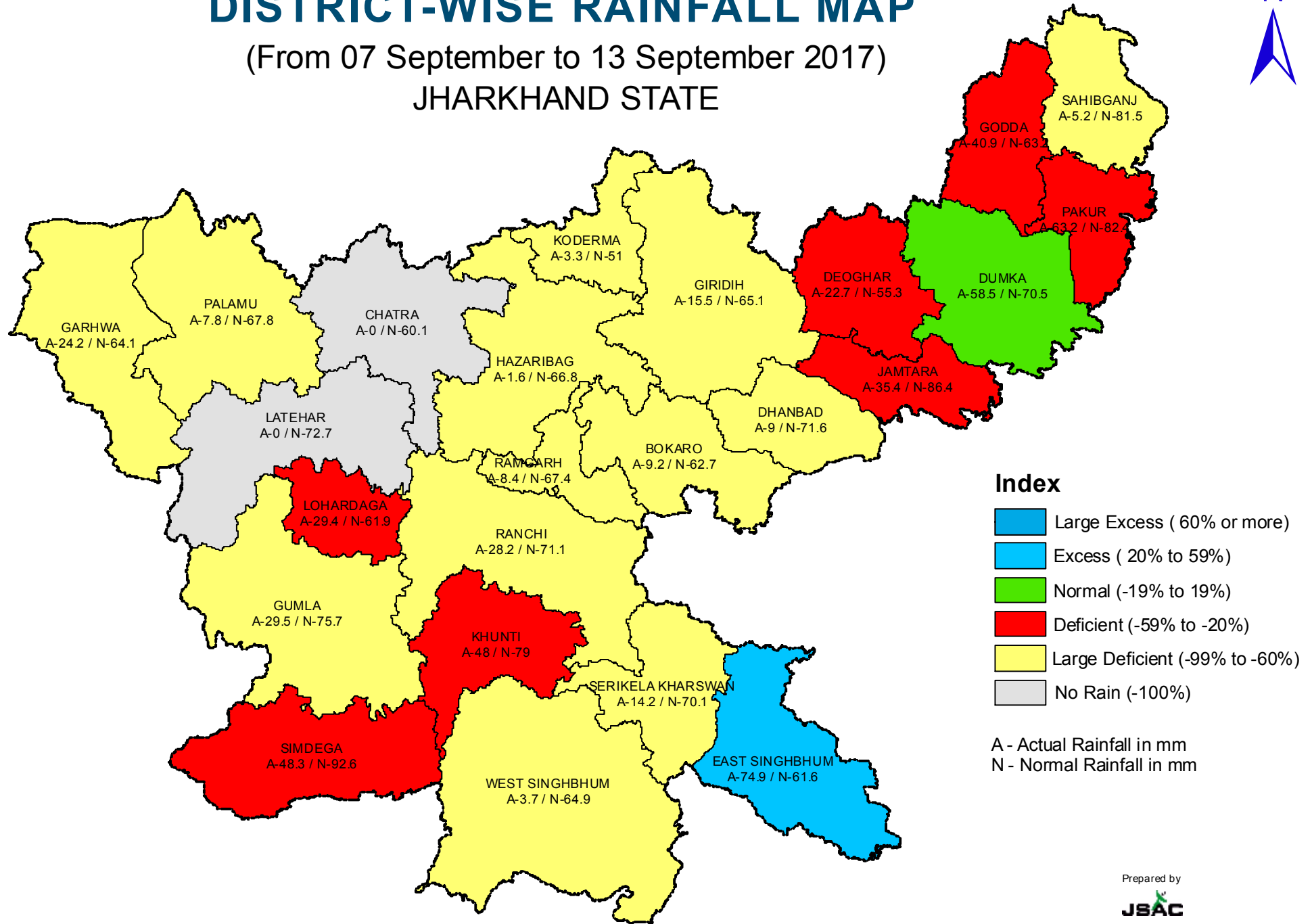


# DISTRICT-WISE RAINFALL MAP

(From 07 September to 13 September 2017)

JHARKHAND STATE



## Index

- Large Excess ( 60% or more)
- Excess ( 20% to 59%)
- Normal (-19% to 19%)
- Deficient (-59% to -20%)
- Large Deficient (-99% to -60%)
- No Rain (-100%)

A - Actual Rainfall in mm  
N - Normal Rainfall in mm

Prepared by



JHARKHAND SPACE APPLICATIONS CENTER  
Dept. of IT & e-Gov., Govt. of Jharkhand