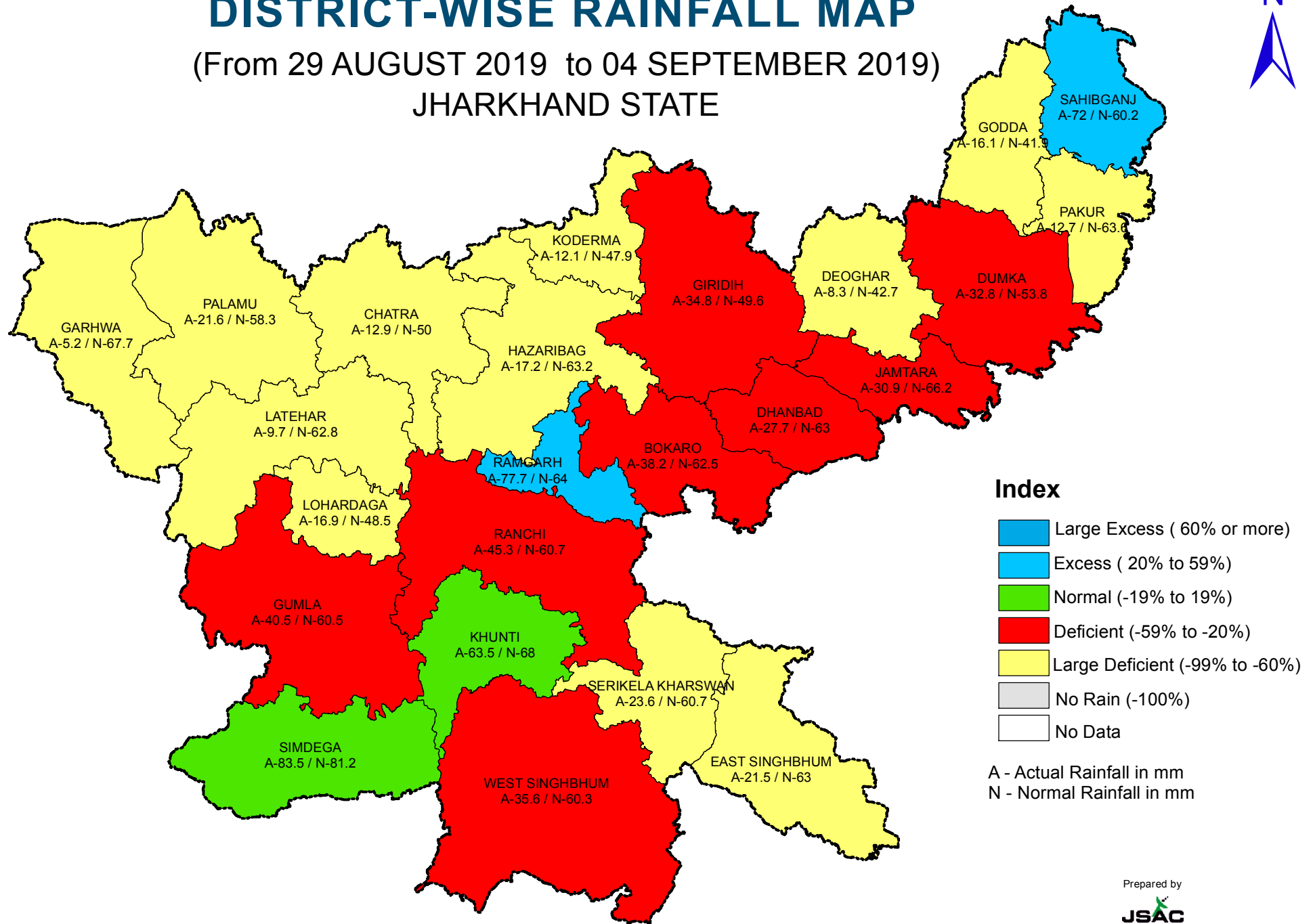


# DISTRICT-WISE RAINFALL MAP

(From 29 AUGUST 2019 to 04 SEPTEMBER 2019)

JHARKHAND STATE



## Index

- Large Excess (60% or more)
- Excess (20% to 59%)
- Normal (-19% to 19%)
- Deficient (-59% to -20%)
- Large Deficient (-99% to -60%)
- No Rain (-100%)
- No Data

A - Actual Rainfall in mm  
N - Normal Rainfall in mm

Prepared by



JHARKHAND SPACE APPLICATIONS CENTER  
Dept. of IT & e-Gov., Govt. of Jharkhand